

Panel Poster

How to install and remove Panel Posters: v1.1

For large, full color pictures, and how-to video go to:

www.lab424.com/using/panel-poster

Find answers to common questions at:

www.lab424.com/support-forums/panel-poster

Send us your questions at:

www.lab424.com/contact/project

Copyright © 2012 Laboratory 424, LLC

12128 N. Division St, #115, Spokane, WA 99218, United States

www.lab424.com, info@laboratory424.com

Safety Warning and Disclaimer

Safety is your responsibility. Projects set forth on the Laboratory 424 web site are a lot of fun, but fun ends quickly if you or someone gets hurt. Take a minute to review these safety warnings and our disclaimer.



Project safety is your responsibility

- Always wear appropriate safety gear.
- Make sure you have adequate skills and experience to construct the project.
- Make sure you know how to properly use all equipment.
- Keep in mind that tools, electricity, chemicals, and other resources used in these projects are dangerous. Use them with appropriate precautions and safety gear.
- These projects are not intended for use by children.

Part and Material handling is your responsibility

- Parts and materials sold through our store may require special handling, precautions, and safety gear to avoid injury. For instance, they may have sharp, rough edges that can cause harm if not handled appropriately, or be small enough to pose a choking hazard for children and pets.
- Wear appropriate safety gear when handling parts and materials, and use caution.
- Keep all parts out of reach of children and pets.

Final product use is your responsibility

- If you build a product from either your own parts or one of our parts kits we do not warrant the fitness or safety of the final product resulting from the project.
- Products assembled by Laboratory 424 are carefully built and inspected in our lab to meet our high standards. We stand behind the quality of products we assemble. If there is a problem with a product we assembled, please contact us so we can do our best to fix the problem. Use of the product is still your responsibility.
- Use your own judgment whether the product is appropriate for the intended use and audience.
- Final product may be inappropriate for children and some people.

Disclaimer

Use of project plans, suggestions, parts, and supplies provided by Laboratory 424, LLC, is at your own risk. Use of the final product resulting from the project is at your own risk. Laboratory 424, LLC disclaims all responsibility for any resulting damage, injury, or expense. It is your responsibility to make sure that your activities comply with applicable laws, including copyright. Please review our Terms and Conditions of Use at www.lab424.com/terms for other important information.

Introduction

Installing a Panel Poster is simply a matter of sticking a non-permanent, double-stick foam block to the wall, placing your panel onto the block, and repeating this process until you are done. Extra care should be taken installing the first panel so that the final poster is level and square on the wall.



Installing is very simple.

Video

Prefer video? We have a 4:25 minute video showing you how to install a panel poster at:

www.lab424.com/using/panel-poster



Step 1: Parts, Tools, & Materials

- Assembled poster panels
- Non-permanent adhesive blocks
- Masking tape
- Pen
- Tape measure
- Wall cleaning supplies
- Vinyl gloves (optional)
- Tweezers (optional)
- Level (optional)
- Ruler, yardstick, or similar (optional)



PIC 1-1: Tape measure, tweezers, cleaning supplies, poster panels, level, pen, ruler, adhesive blocks, tape, gloves.

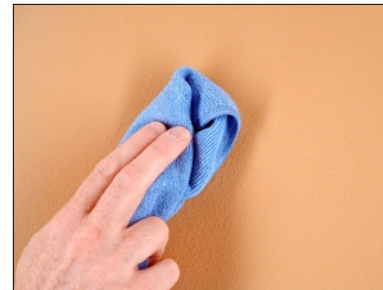
Step 2: Prepare Surface

The adhesive blocks have a rubber-based, non-permanent adhesive that can bond and removed cleanly from all sorts of surfaces including wood, plastics, metal, powder coated materials, and painted materials. Surfaces may be slightly textured or uneven since the foam will mold to the surface with firm pressure. Painted surfaces should be in good condition and not show signs of flaking. Weakening paint means the block may tear away the painted surface when removed. We don't recommend installing posters on wallpaper since the blocks may tear away the surface when removed. Test in an inconspicuous area before you install. Also, glass that allows the adhesive to be exposed to sunlight will, over time, diminish the block's holding power. (PIC 2-1)

You should clean the surface according to the surface manufacturer's instructions. If unsure, at least wipe the area down with a dry, lint-free cloth to remove dust. (PIC 2-2) On most surfaces a 50/50 mixture of Isopropyl Alcohol and water will clean the surface nicely (test on a small, inconspicuous area first). (PIC 2-3) Dry the surface with a lint-free cloth before application. For an optimal bond, the temperature of the surface should be between 65° and 100° F.



PIC 2-1: Your surface should be in good condition.



PIC 2-2: Remove dust using a lint-free cloth.



PIC 2-3: Cleaning the wall thoroughly is best.

Step 3: Mark Location

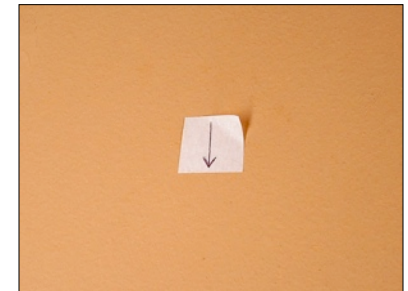
Assemble your poster on the floor near the wall you will be installing it on. (PIC 3-1) Measure the poster and determine where the upper left corner will go on the wall. Mark it with a piece of tape. Put the bottom edge of the tape where the top of the panel will go. (PIC 3-2) Draw an arrow where the left edge of the panel will go. (PIC 3-3)



PIC 3-1: Assemble your poster on the floor near the installation wall.



PIC 3-2: The bottom edge of the tape marks the top edge of the poster.



PIC 3-3: Draw an arrow pointing to the left edge of your poster.

Step 4: Set Top Row Guide

To make sure your poster is installed level and square on the wall we need to put up a temporary guide for the top row.

1. **Measure left mark**
Measure the distance from the ceiling or floor to the marker you installed in Step 3. (PIC 4-1)
2. **Apply right mark**
Measure where the upper right corner of the poster should go and place the bottom edge of a piece of tape at this mark. (PIC 4-2)
3. **Apply tape**
Stretch a single strip of tape from the left to the right marker and line up the bottom edges. Lightly apply the tape to the wall. (PIC 4-3)
4. **Verify and adjust**
Measure the left, center, and right heights of the bottom of the tape. They should be close to equal. (PIC 4-4) Adjust the tape as needed. If desired, you can verify the poster will be level by using a level and a ruler. (PIC 4-5)



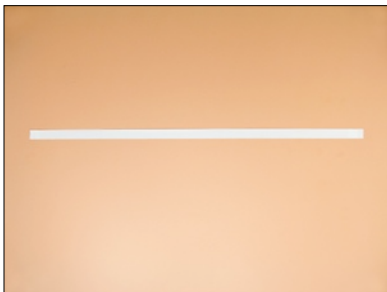
PIC 4-1: Measure the distance to the bottom of your tape.



PIC 4-2: Use that measurement to place a marker for the top right of your poster.



PIC 4-3: Stretch tape between the markers. Align bottom edge.



PIC 4-4: Lightly apply tape. It should be close to level.



PIC 4-5: Use a level and ruler (or a tape measure) to verify.

Step 5: Install First Panel

Peel off an adhesive block from the sheet (be careful not to separate the adhesive film from the block). (PIC 5-1) Pick up the top left panel.

- Position panel and block**
 Position the top of the panel along the bottom edge of the tape at the upper-left marker. Approximate where the center of the panel is located on the wall by holding the adhesive block over the center of the panel. (PIC 5-2)
- Apply block**
 Pull the panel away and press the block onto the spot you chose. (PIC 5-3) Apply firm pressure for 10 seconds while rocking your thumb back and forth to bond with the surface. (PIC 5-4) Carefully peel away the protective cover on the block (tweezers help). (PIC 5-5)
- Apply panel**
 Position the top of the panel along the bottom edge of the tape, and align the corner at the marker on the wall. (PIC 5-6) (The panel thickness is designed to be slightly taller than the adhesive block so it will not stick to it.) Gently press in the center over the foam block to bond the panel to the adhesive. (PIC 5-7) Using brief, light, finger presses, move around the foam block area to stick the panel to the entire surface of the block. (Don't press too hard. It doesn't take much pressure to set the paper to the adhesive.) (PIC 5-8)
- Adjust panel**
 Double-check your alignment of the top edge of the panel to the bottom edge of the tape. If necessary, you can shift the panel a little to the left or right by gently nudging the bottom edge. (PIC 5-9)



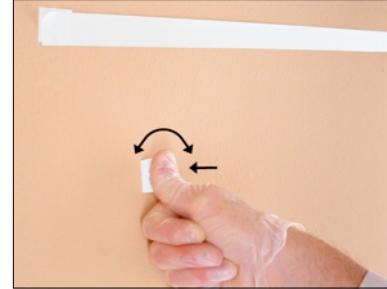
PIC 5-1: Make sure to not separate the film from the block.



PIC 5-2: Position panel and approximate center.



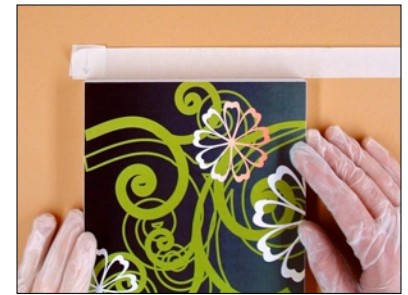
PIC 5-3: Place the block.



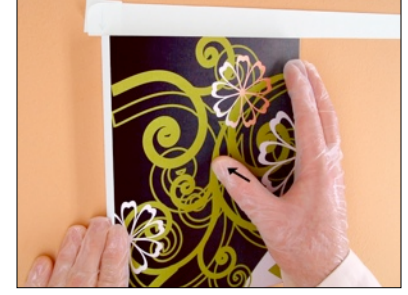
PIC 5-4: Apply firm pressure while rocking your thumb back and forth.



PIC 5-5: Remove the protective cover.



PIC 5-6: Align the panel to the guides.



PIC 5-7: Gently press to stick the panel to the block.



PIC 5-8: Use brief, light presses to stick entire block surface to panel.



PIC 5-9: You can adjust the panel a little if needed.

Step 6: Install Next Panel

Get another adhesive block from the sheet and your next panel to install.

- Position panel and block**
 Position the panel next to the previous panel. Approximate where the center of the panel is located on the wall by holding the adhesive block over the center of the panel. (PIC 6-1)
- Apply block**
 Pull the panel away and press the block onto the spot you chose. (PIC 6-2) Apply firm pressure for 10 seconds while rocking your thumb back and forth to bond with the surface.

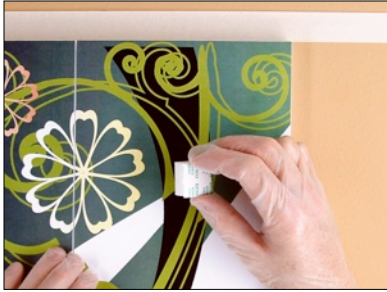
(PIC 6-3) Carefully peel away the protective cover on the block (tweezers help). (PIC 6-4)

3. **Apply panel**

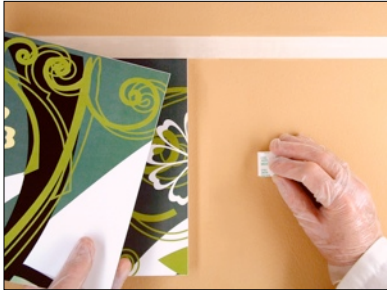
Place the panel on the wall aligning the edge of the panel with the previous panel and the bottom edge of the tape (top row only). Apply gentle, lateral pressure so the edges of each panel touch and close the gap nicely. (PIC 6-5) Once aligned, gently press in the center over the foam block to fix the panel. (PIC 6-6) Using brief, light, finger presses, move around the foam block area to stick the panel to the entire surface of the block. (PIC 6-7)

4. **Adjust panel**

Double-check alignment. If necessary, you can shift the panel a little to the left or right by gently nudging the bottom edge. (PIC 6-8)



PIC 6-1: Position panel and approximate center.



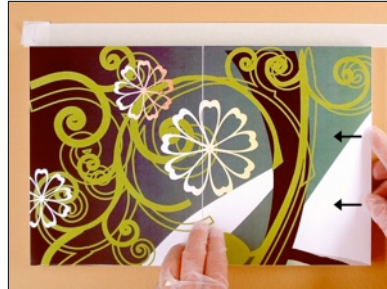
PIC 6-2: Place the block.



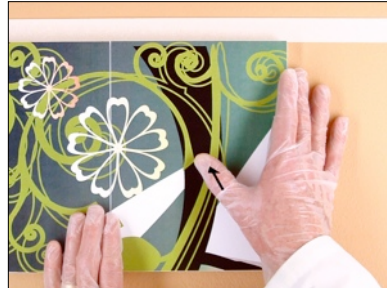
PIC 6-3: Apply firm pressure while rocking your thumb back and forth.



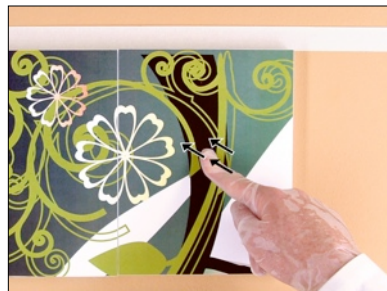
PIC 6-4: Remove the protective cover.



PIC 6-5: Align the panel and apply gentle, lateral pressure to close the gap.



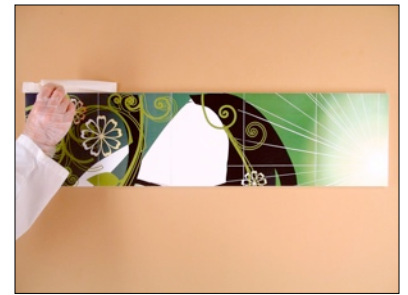
PIC 6-6: Gently press to stick the panel to the block.



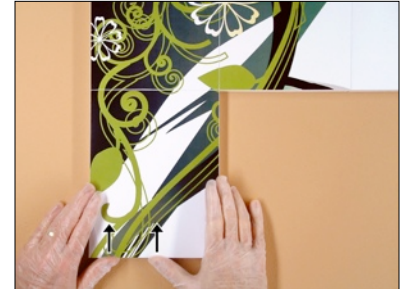
PIC 6-7: Use brief, light presses to stick entire block surface to panel.



PIC 6-8: You can adjust the panel a little if needed.



PIC 7-3: Carefully remove tape after first row.



PIC 7-4: Align left edge and apply gentle pressure to close gap.



PIC 7-5: Align edges and apply gentle pressure to close gap.

Step 7: Install The Rest

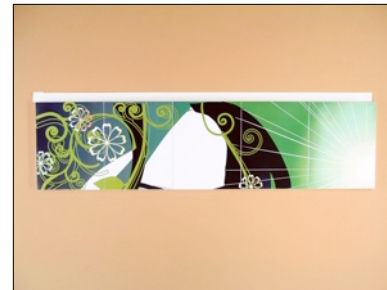
The rest of the panels are very easy to install. You simply have to align the next panel with the previous, and so on. Repeat Step 6 for the rest of the panels. Do not worry about slight imperfections in panel-to-panel alignment. It isn't noticeable in most installations. (PIC 7-1)

Install Tips:

- **First Row**
Make sure to not only align with the adjacent panel, but also the bottom edge of the tape. (PIC 7-2) After the first row is installed, remove the tape. (PIC 7-3)
- **Left Edge Panels**
Make sure the left edge is aligned with the panel above it. Apply gentle, lateral pressure to close the gap between the two panels. (PIC 7-4)
- **Interior Panels**
Make sure the left and top edge is aligned with the adjacent panels. Apply gentle, lateral pressure to close the gaps between panels. (PIC 7-5)



PIC 7-1: Install the rest in a similar way.



PIC 7-2: Align with bottom edge of tape.

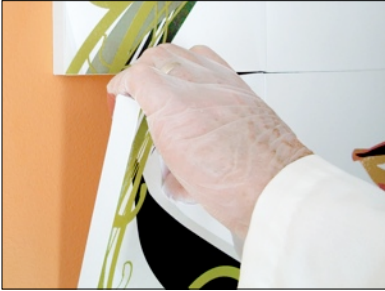
Removing

The adhesive foam blocks use a rubber-based, non-permanent film that you can remove cleanly from most surfaces. This allows you to replace damaged panels and move your poster without harming the wall.

To remove a damaged panel (or a poster that was, "So last month.") just tear off the panel and remove the adhesive block from the wall. (PIC 8-1, PIC 8-2) If the foam block separates from the adhesive film, grab a corner of the film and peel it off the wall (tweezers help). (PIC 8-3)

To remove panels you want to preserve you need to take a different approach. The "open corner" design on the back of the panel allows you to lift a corner without damaging the panel. (PIC 8-4)

- 1. Lift corner**
Gently lift the panel from a corner just far enough to fit your fingers under it. (PIC 8-5)
- 2. Position fingers**
Slide your fingers under the panel until you feel the adhesive block. (PIC 8-6)
- 3. Separate panel**
With your finger tips, apply pressure against the panel to separate it from the block. (PIC 8-7)
- 4. Remove block**
Remove the adhesive block from the wall. If the block is stuck to the panel, lay the panel face down on a table and put one hand around the block to stabilize the surface. Slowly peel the block from the panel. (PIC 8-8) If the foam block separates from the adhesive film, grab a corner of the film and peel it off the panel (tweezers help). (PIC 8-9)



PIC 8-1: Just tear unwanted panels off the wall.



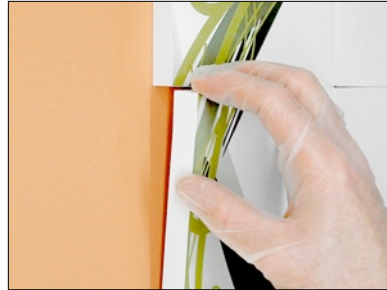
PIC 8-2: Peel the block off the wall.



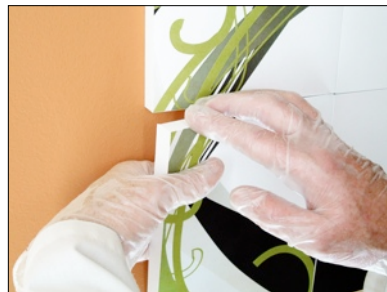
PIC 8-3: If a film is left behind, remove with tweezers.



PIC 8-4: The open corner design allows panel to twist for removal.



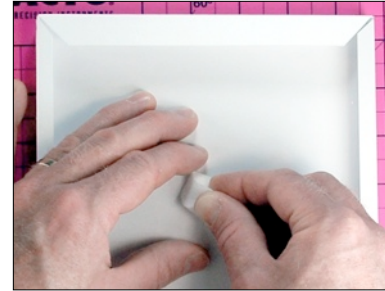
PIC 8-5: Gently lift a corner (about a finger's width high).



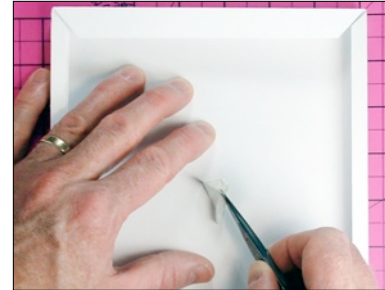
PIC 8-6: Slide your fingers under the panel.



PIC 8-7: Pressure by the block will cleanly separate the panel.



PIC 8-8: Support with one hand while removing with the other.



PIC 8-9: If a film is left behind, remove with tweezers.

Reusing

You can reuse the adhesive foam blocks. Reusability depends on how clean the wall and hands were during the previous install, and if the blocks were carefully removed from the wall intact. Reused blocks may not hold as long as new blocks; however, we've had great success reusing blocks several times for long periods of time.

Swapping posters

Swapping posters is the easiest way to reuse the adhesive blocks. You do not have to remove the adhesive blocks from the wall, and can use the previous poster for aligning your new poster. (PIC 9-1)

1. Create new poster

Build the new poster. Try to make the new poster's panel size close to the size of the previous poster. This avoids reposition the adhesive blocks on the wall. If not, just reposition the blocks as needed so they are close to the center of the new panels.

2. Swap first row

Carefully remove the first row from the previous poster leaving the adhesive blocks on the wall. (PIC 9-2) Install the upper left panel from the new poster. Make sure it is aligned with the left edge and snug against the panel below it. (PIC 9-3). Install the rest of the panels in the first row. Make sure each panel is snug with the left and bottom panels. (PIC 9-4)

3. Swap the rest

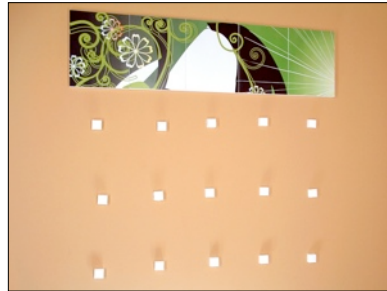
Carefully remove the rest of the previous poster panels leaving the adhesive blocks on the wall. (PIC 9-5) Install the rest of the panels. (PIC 9-6)



PIC 9-3: Align panel and apply gentle pressure to close gap.



PIC 9-4: Install rest of the first row.



PIC 9-5: Remove the other rows.



PIC 9-6: Install rest of the panels.



PIC 9-1: We will replace this poster with a new one.



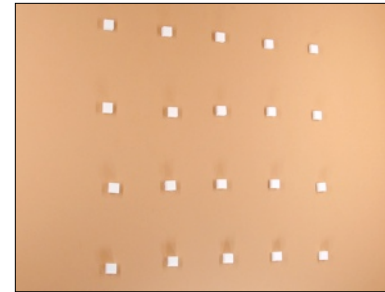
PIC 9-2: Remove the first row of panels.

Storing used blocks

Get some wax paper and tear off two sheets that will fit all your blocks. (PIC 9-7) Carefully remove all the previous poster panels, leaving the adhesive blocks on the wall. (PIC 9-8) Carefully remove each block from the wall without separating the thin film adhesive from the block. (PIC 9-9) The best way to do this is to start removal by prying up a corner. If the adhesive starts to separate, try a different corner or use a fingernail to hold the adhesive in place. Place the block on the wax paper. (PIC 9-10) Once all the blocks are removed, stick the second sheet of wax paper over the blocks. (PIC 9-11) Store in a cool, dry place.



PIC 9-7: Adhesive blocks can be stored on wax paper.



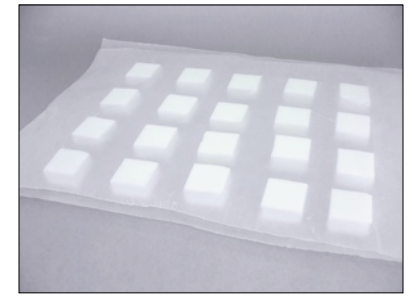
PIC 9-8: Remove all the panels.



PIC 9-9: Carefully remove each block.



PIC 9-10: Gently place the block on the wax paper.



PIC 9-11: Cover the blocks with another sheet of wax paper.