



Disc Mount

Using Guide: v1.6

For large, full color pictures go to:

www.lab424.com/using/disc-mount

Find answers to common questions at:

www.lab424.com/support-forums/disc-mount

Send us your questions at:

www.lab424.com/contact/project

Copyright © 2012 Laboratory 424, LLC
12128 N. Division St, #115, Spokane, WA 99218, United States
www.lab424.com, info@laboratory424.com

Safety Warning and Disclaimer

Safety is your responsibility. Projects set forth on the Laboratory 424 web site are a lot of fun, but fun ends quickly if you or someone gets hurt. Take a minute to review these safety warnings and our disclaimer.



Project safety is your responsibility

- Always wear appropriate safety gear.
- Make sure you have adequate skills and experience to construct the project.
- Make sure you know how to properly use all equipment.
- Keep in mind that tools, electricity, chemicals, and other resources used in these projects are dangerous. Use them with appropriate precautions and safety gear.
- These projects are not intended for use by children.

Part and Material handling is your responsibility

- Parts and materials sold through our store may require special handling, precautions, and safety gear to avoid injury. For instance, they may have sharp, rough edges that can cause harm if not handled appropriately, or be small enough to pose a choking hazard for children and pets.
- Wear appropriate safety gear when handling parts and materials, and use caution.
- Keep all parts out of reach of children and pets.

Final product use is your responsibility

- If you build a product from either your own parts or one of our parts kits we do not warrant the fitness or safety of the final product resulting from the project.
- Products assembled by Laboratory 424 are carefully built and inspected in our lab to meet our high standards. We stand behind the quality of products we assemble. If there is a problem with a product we assembled, please contact us so we can do our best to fix the problem. Use of the product is still your responsibility.
- Use your own judgment whether the product is appropriate for the intended use and audience.
- Final product may be inappropriate for children and some people.

Disclaimer

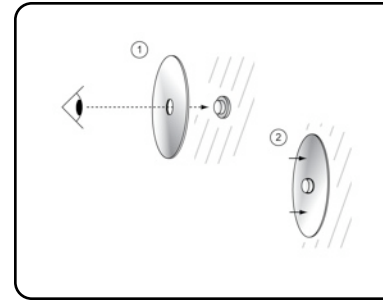
Use of project plans, suggestions, parts, and supplies provided by Laboratory 424, LLC, is at your own risk. Use of the final product resulting from the project is at your own risk. Laboratory 424, LLC disclaims all responsibility for any resulting damage, injury, or expense. It is your responsibility to make sure that your activities comply with applicable laws, including copyright. Please review our Terms and Conditions of Use at www.lab424.com/terms for other important information.

! WARNING !

Handle neodymium magnets with care to avoid injury and property damage.

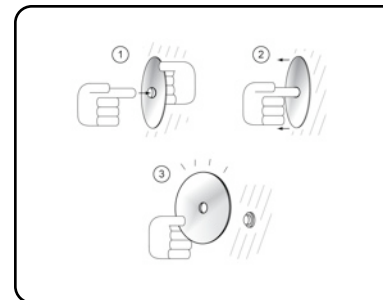
- **Magnets are very strong (2 lbs of pull)!** Do not allow magnets to snap together with their full force. They are brittle and may break in a collision sending metal pieces in all directions. We recommend wearing protective goggles and gloves while handling these magnets during assembly.
- **Magnetic fields from these magnets can cause damage!** Do not bring within 12 inches of any magnetic based storage devices such as desktop/laptop computers, hard drives, floppy disks, cassette tapes, VHS tapes, or credit cards. Keep away from computer monitors, VCR's, and TV's. Anyone with a Pacemaker should keep at least 3 feet from magnets. A Pacemaker may be damaged or switched into "Test Mode". If unsure, consult your doctor.
- **Not to be handled by children and pets!** Magnets are small and can be swallowed or pose a choking hazard. Do not insert into any part of the body.
- **Do not cut, saw, drill, or burn!** Cutting, sawing, drilling will break the magnet, and create a very flammable dust. Burning magnets will produce toxic fumes.

Mounting a Disc



Align the hole on the disc with the foam hub. Gently push the disc so the foam hub passes through the hole and rests against the washer.

Removing a Disc



Using 2 hands, grab the outer edge of the CD and place a finger on the foam hub. Pull the disc away from the mount while holding the hub in place with your finger.

Using 1 hand, grab the outer edge of the CD with the thumb and ring-finger while holding the foam hub in place with your index finger. Pull the CD away from the mount with your thumb and ring finger.

Thanks for buying some Disc Mounts!

Now you can store CDs in all sorts of cool and convenient places. This guide will show you how to use your disc mounts. **To see larger, full color pictures on how to use disc mounts, and get some ideas on displaying your CDs go to:**

www.lab424.com/using/disc-mount

Enjoy!